

MIXER BOWLS
Fits HOBART
STAINLESS STEEL



MB12
12 QT
10 3/4" ID
10" Height



MB20
20 QT
12 1/2" ID
11 1/2" Height



MB30
30 QT
14" ID
13 1/2" Height



MB40
40 QT
14" ID
17" Height



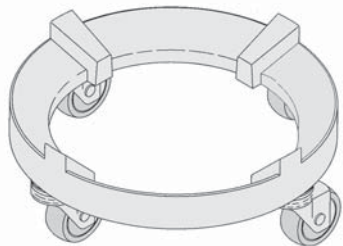
MB60
60 QT
18" ID
17" Height



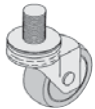
MB140
140 QT
22 1/2" ID
26" Height



MB80
80 QT
20" ID
18 1/2" Height



HM2052
Bowl Truck
Cast Iron
(Fits 60, 80 & 140 QT)
16 1/2" Diameter



HM2053
Caster 3"
3", 14TPI



HM2064
Mixing Bowl Scraper

PARTS

NBS P/N	OEM P/N	Description	FITS
HM2052	315011 / 875748	BOWL TRUCK	60, 80 & 140
HM2053	087668 / 876669	CASTER	HM2052 BOWL TRUCK
HM2054	N/A	Mixing Bowl Scraper	Universal with Any Bowl

PLEASE READ



Check bowl dimensions prior to ordering to insure compatibility. Some models take multiple size bowls.

BOWLS

QUART CAPACITY	NBS P/N	OEM P/N	FITS
12	MB12	295643	A120
20	MB20	275683	A200, A200-DT, A200-F, A200-FD, L20, D340
30	MB30	437410	D300, D300-DT, D330, D340
40	MB40	315245	D340, H600, H600D, P660, L800, L800U, M802, V1401, V1401U, Legacy Bowls and 30 - 80 quart Univex Bowls
60	MB60	27688	H600, H600D, L800, L800D, M802, P660, V1401, V1401U
80	MB80	275690	L800, L800D, M802, T801, V1401, V1401U
140	MB140	917140	HL800, HL1400N, V1401, V1401U

OUR BOWLS WILL ALSO FIT THE OTHER MIXERS LISTED...

QUART CAPACITY	NBS P/N	FITS
20	MB20	BERKEL BA20 INTEDGE MX20 MCGRAW EDISON 5020 POWERMASTER A20 THUNDERBIRD ARM-02 TOASTMASTER A200
30	MB30	INTEDGE MX30 TOLEDO 5030
60	MB60	INTEDGE MX60

The above described parts are supplied by National Band Saw Company as replacement parts for Hobart equipment.



MIXER ACCESSORIES

Fits HOBART



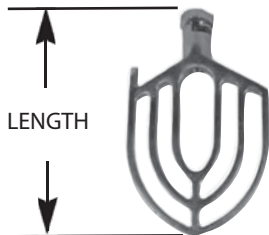
J DOUGH HOOK "E"

QUART CAPACITY	NBS P/N	OEM P/N	FITS
20	MJ20	275465 / 295119	A200, D340
30	MJ30	295120	D300, D340
60	MJ60	295175	H600-60QT, L800-60QT



SPIRAL DOUGH HOOK "ED"

QUART CAPACITY	NBS P/N	OEM P/N	FITS
20	MS20	477521	A200, D340
30	MS30	478596	D300, D340
60	MS60	295174	H600, H600D, P660 - 60QT, L800
80	MS80	437701	L800 - 80 QT



FLAT PADDLE "B"

QUART CAPACITY	NBS P/N	OEM P/N	FITS	SHAFT	WIDTH DIA	LENGTH
20	MF20	275461 / 275459	A200, D340	1.0	8 1/4"	13"
30	MF30	275450	D300, D340	1 1/8"	9 1/2"	16"
60	MF60	275885	H600	1 1/2"	11 1/2"	20"
80	MF80	275448	L800	1 1/2"	13 1/2"	21"
140	MF140	275883	V1401 CLASSIC	1 1/2"	16"	25 1/2"



PASTRY PADDLE "P"

QUART CAPACITY	NBS P/N	OEM P/N	FITS
20	MP20	295036	A200

STAINLESS
STEEL



WIRE WHIP "D"

QUART CAPACITY	NBS P/N	OEM P/N	FITS
20	MW20	275897	A200, D340
30	MW30	295163 / 275899	D300, D340
60	MW60	295154	H600
80	MW80	295149	L800

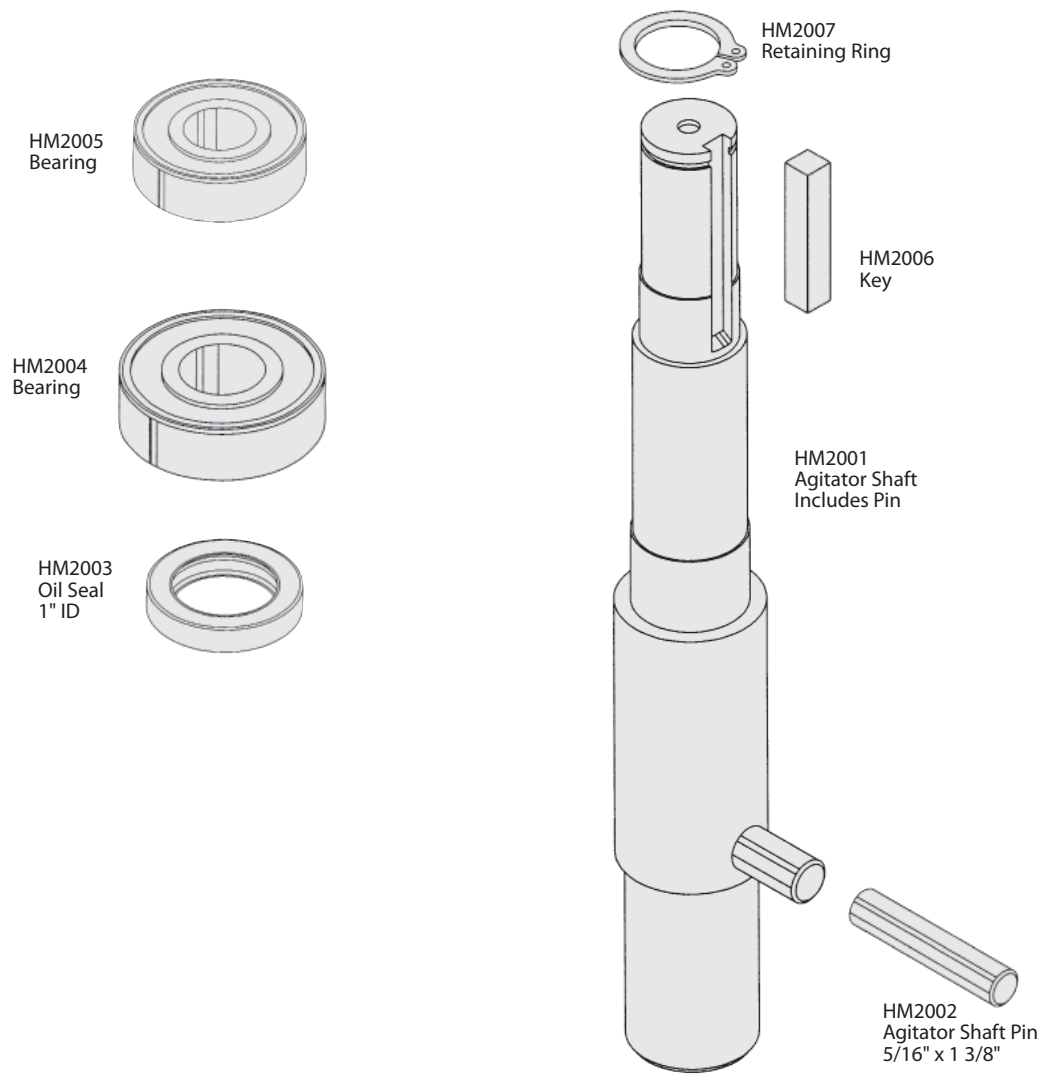
The above described parts are supplied by National Band Saw Company as replacement parts for Hobart equipment.



AGITATOR SHAFT & COMPONENTS

Fits HOBART
MODEL A-200

MIXERS/
BREAD SLICERS



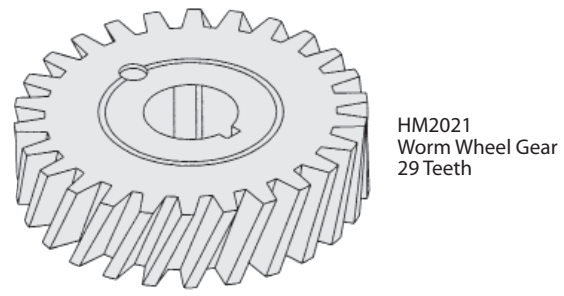
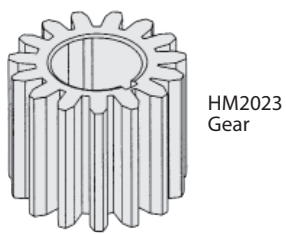
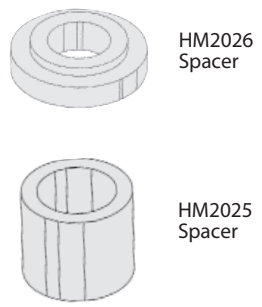
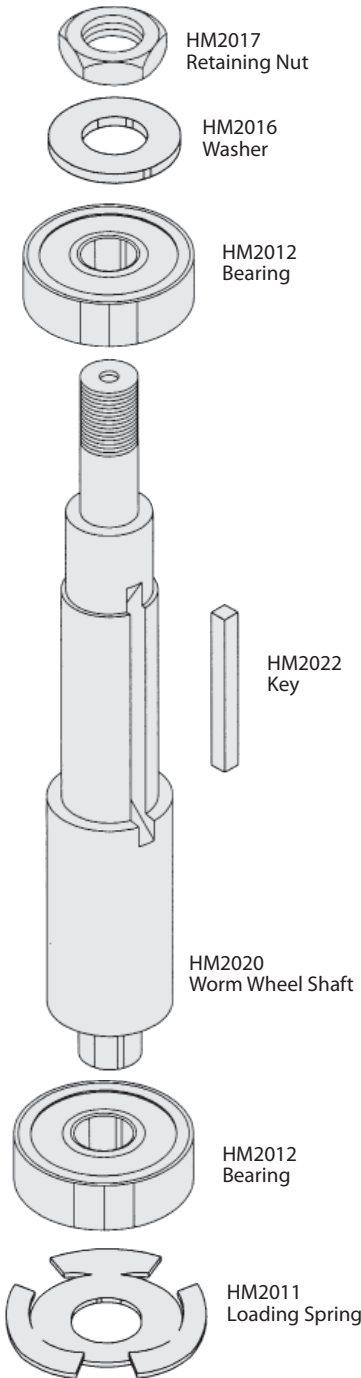
FITS MODELS

NBS P/N	OEM P/N	DESCRIPTION	A-120	A-200
HM2001	113936	Agitator Shaft		X
HM2002	65062-1	Agitator Shaft Pin 5/16" x 1 3/8"		X
HM2003	23482	Oil Seal 1" ID		X
HM2004	BB-20-6	Bearing		X
HM2005	BB-17-12	Bearing		X
HM2006	12430-55	Key		X
HM2007	RR-004-18	Retaining Ring	X	X

The above described parts are supplied by National Band Saw Company as replacement parts for Hobart equipment.

WORM WHEEL SHAFT & COMPONENTS

Fits HOBART
MODELS #A-120, A-200



MB12
12 QT
10 3/4" ID
10" Height



MB20
20 QT
12 1/2" ID
11 1/2" Height

See pages 50 for Bowls and 51 for Accessory Attachments



MS20
Spiral Dough
Hook



MF20
Flat Paddle "B" Style



MW20
Wire Whip
Stainless Steel

NBS P/N	OEM P/N	DESCRIPTION	FITS MODELS	
			A-120	A-200
HM2011	SL-02-08	Loading Spring	X	X
HM2012	BB-005-01	Bearing	X	X
HM2016	WS-006-36	Washer	X	X
HM2017	12710	Retaining Nut	X	X
HM2020	291128	Worm Wheel Shaft	X	X
HM2021	124751-3	Worm Wheel Gear	X	X
HM2022	12430-4	Key	X	X
HM2023	124748	Gear	X	X
HN2025	124765-1	Spacer	X	X
HM2026	124745	Spacer	X	X

The above described parts are supplied by National Band Saw Company as replacement parts for Hobart equipment.

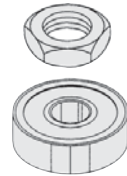


TRANSMISSION SHAFT & COMPONENTS

Fits HOBART
MODEL # A-200



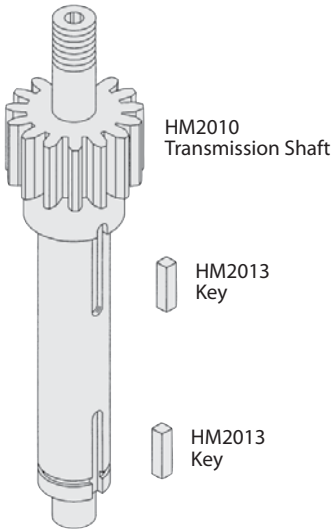
HM2017 Retaining Nut



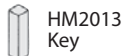
HM2015 Bearing



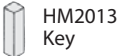
HM2016 Washer



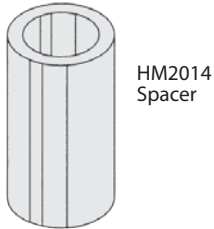
HM2010 Transmission Shaft



HM2013 Key



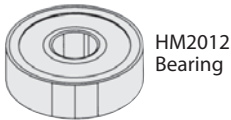
HM2013 Key



HM2014 Spacer



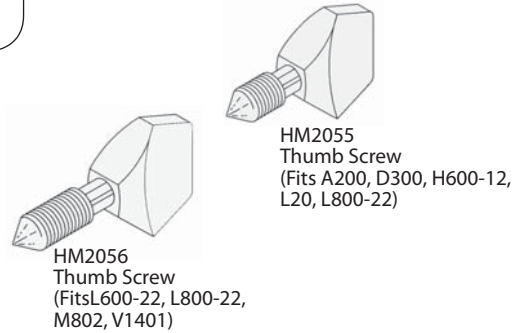
HM2007 Retaining Ring



HM2012 Bearing



HM2011 Loading Spring



HM2055 Thumb Screw
(Fits A200, D300, H600-12, L20, L800-22)

HM2056 Thumb Screw
(Fits L600-22, L800-22, M802, V1401)

HM2057 Flex Gear Belt
L=51", W=1"
(Fits M802)

HM2058 Flex Gear Belt
L=54", W=1 1/2"
(Fits V1401)

NEW HM2072 V-Belt
L=32"

NEW HM2073 V-Belt
L=35"

HM2054 Shock Absorber Spring

HM2051 Key

HM2024 Worm Gear

HM2050 Lock Nut

FITS MODELS

NBS P/N	OEM P/N	DESCRIPTION	A-120	A-200	D300	M802	V1401
HM2007	RR-004-18	Retaining Ring		X			
HM2010	291236	Transmission Shaft	X	X			
HM2011	SL-02-08	Loading Spring		X			
HM2012	BB-005-01	Bearing		X			
HM2013	435297	Key	X	X			
HM2014	12697	Spacer	X	X			
HM2015	BB-005-02	Bearing		X			
HM2016	WS-6-36	Washer		X			
HM2017	12710	Retaining Nut		X			
HM2024	291221	Worm Gear	X	X	X		
HM2050	NS-32-23	Lock Nut	X	X	X		
HM2051	12747	Key	X	X			
HM2054	12757	Shock Absorber Spring	X	X	X		
HM2055	108197-1	Thumb Screw	X	X	X		
HM2056	108197-2	Thumb Screw				X	X
HM2057	65107	Flex Gear Belt				X	
HM2058	68043	Flex Gear Belt					X
HM2072	BV-013-18	V-Belt				X	X
HM2073	BV-013-17	V-Belt				X	X

The above described parts are supplied by National Band Saw Company as replacement parts for Hobart equipment.

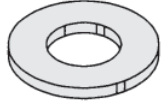
MIXERS/
BREAD SLICERS

PLANETARY SHAFT & COMPONENTS

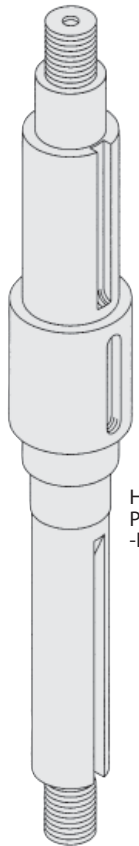
Fits HOBART
MODELS #A-120, A-200



HM2047
Stop Nut



HM2046
Washer



HM2030
Planetary Shaft
-New Style



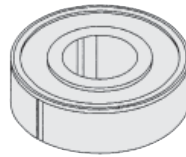
HM2045
Key



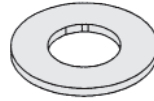
HM2039
Key



HM2037
Key



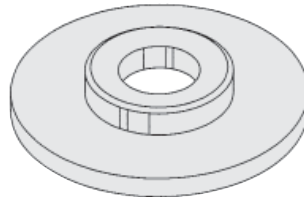
HM2044
Bearing



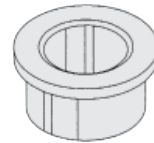
HM2041
Shim .001"

HM2042
Shim .003"

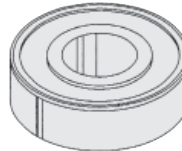
HM2043
Shim .010"



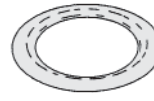
HM2040
Spacer



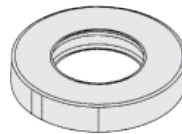
HM2038
Clutch Gear Bearing



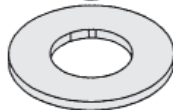
HM2004
Bearing



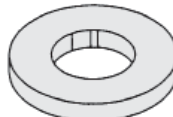
HM2036
O-Ring



HM2035
Oil Seal



HM2031
Fiber Washer



HM2032
Retaining Washer



HM2033
Special Nut



HM2034
Acorn Nut

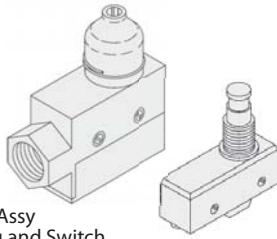
FITS MODELS

NBS P/N	OEM P/N	DESCRIPTION	A-120	A-200
HM2004	BB-20-6	Bearing		X
HM2030	124734	Planetary Shaft	X	X
HM2031	124946	Fiber Washer	X	X
HM2032	WS-024-01	Retaining Washer	X	X
HM2033	10928-2	Special Nut	X	X
HM2034	24715-3	Acorn Nut	X	X
HM2035	114695	Oil Seal	X	X
HM2036	67500-78	O-Ring		X
HM2037	12430-17	Key	X	X
HM2038	12695	Clutch Gear Bearing		X
HM2039	12430-59	Key	X	X
HM2040	107145	Spacer	X	X
HM2041	WS-10-18	Shim .001"	X	X
HM2042	WS-10-19	Shim .003"	X	X
HM2043	WS-10-20	Shim .010"	X	X
HM2044	BB-20-18	Bearing	X	X
HM2045	109070-2	Key	X	X
HM2046	WS-8-13	Washer	X	X
HM2047	NS-32-29	Stop Nut	X	X

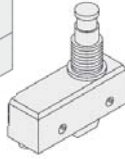
The above described parts are supplied by National Band Saw Company as replacement parts for Hobart equipment.

ELECTRICAL COMPONENTS

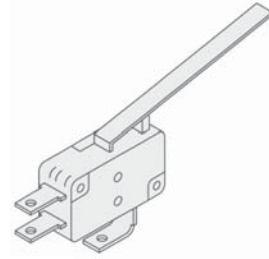
HM2070
Interlock Switch Assy
Includes Housing and Switch



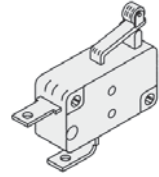
HM2071
Interlock Switch Only



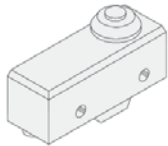
HM2062
Switch
fits... A200



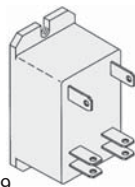
HM2061
Switch
fits... L20



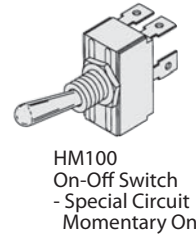
HM2063
Switch
fits...H600, L800



HM2059
Relay
fits... L20, A120,
A200



HM2060
Start Switch
fits... L20, A120,
A200, D300



HM100
On-Off Switch
- Special Circuit
Momentary On



HM2069
Capacitor
145-174 mfd
fits... A200



HM2068
Capacitor Cap



HM2065
Capacitor
650-750 mfd
fits...H600, L800, M802



HM2067
Capacitor Cap



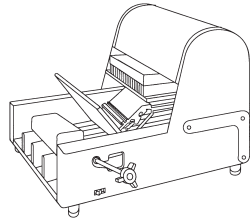
HM2066
Capacitor
243 -292 mfd
fits...D300, L20

FITS MODELS

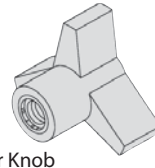
NBS P/N	OEM P/N	DESCRIPTION	A120	A200	D300	H600	L20	L600	L800	M802
HM100	875567	On-Off Switch	X	X						
HM2059	87714-042-1	Relay	X	X			X			
HM2060	271612-2	Start Switch	X	X	X		X			
HM2061	87711-201-2	Switch					X			
HM2062	87711-248	Switch		X						
HM2063	87711-71-1	Switch				X			X	
HM2065	70487-9	Capacitor				X			X	X
HM2066	70487-1	Capacitor			X		X			
HM2067	70486-2	Capacitor Cap			X		X			X
HM2068	70486-3	Capacitor Cap				X			X	
HM2069	70487-18	Capacitor		X						
HM2070	87711-060-1	Interlock Switch - Assy				X			X	
HM2071	87711-060-1	Interlock Switch - Only				X			X	

The above described parts are supplied by National Band Saw Company as replacement parts for food machine equipment.

BERKEL BREAD SLICERS



BS017
Scrap Pan Knob



BS005
Damper Knob



BS003
Crankshaft
Bearing



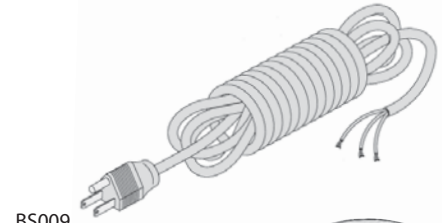
BS013
Switch Knob



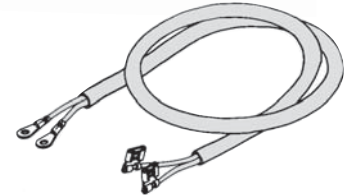
BS016
Switch Rod
& Knob Assy

BS014
Switch Operating Rod

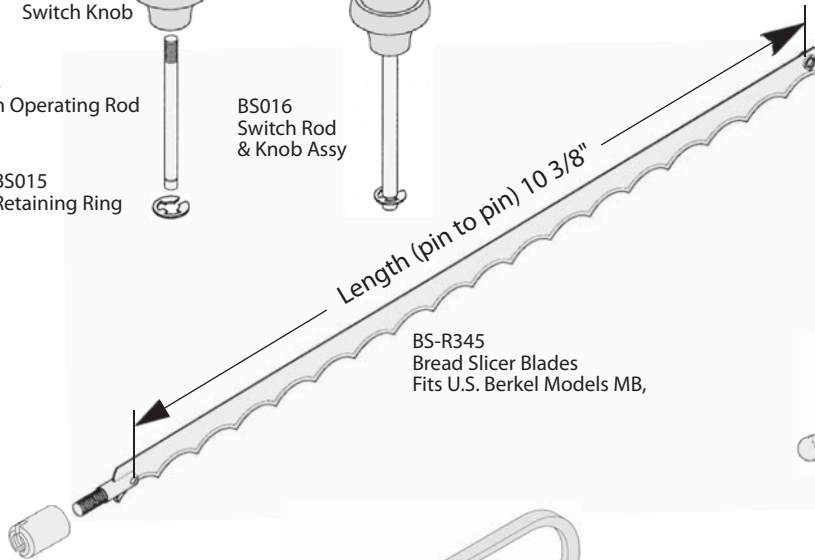
BS015
Retaining Ring



BS009
Power Cord
6' Long
16 AWG

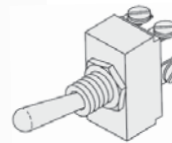


BS008
Switch To Motor Cord
44" Long



BS-R345
Bread Slicer Blades
Fits U.S. Berkel Models MB,

Length (pin to pin) 10 3/8"



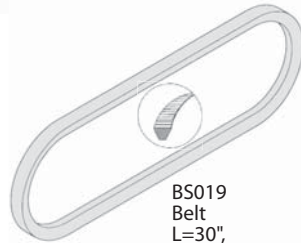
BS001
Switch

BS010
Blade Tension Nut



BT036
Safety Glove
Cloth w/ Steel Wire

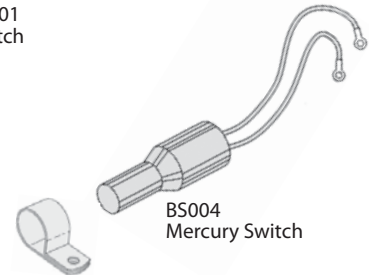
This glove is ambidextrous...
fits right or left hand
Great for protection
against serious cuts.



BS019
Belt
L=30",
W=1/2"



BS018
Motor Capacitor
(189-227mfd)



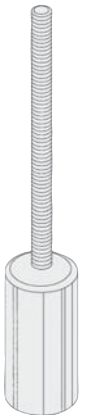
BS004
Mercury Switch

BS011
Switch Clamp
Holds Mercury Switch on Bread
Slicers (steel)

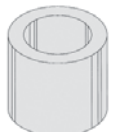
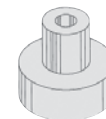
FITS MODELS

NBS P/N	OEM P/N	DESCRIPTION	MB	GMB
BS001	2675-0028	Switch	X	X
BS002	A3000-1	Rubber Foot	X	
BS003	2374-0010	Chankshaft Bearing	X	X
BS004	2675-0646	Mercury Switch	X	
BS005	2275-0063	Damper Knob		X
BS006	4575-0208	Shoe Post		X
BS007	3675-0061	Shoe		X
BS008	4175-0032	Switch to Motor Cord	X	X
BS009	4175-0031	Power Cord	X	X
BS010	3375-0990	Blade Tension Nut	X	X
BS011	3675-0219	Switch Clamp	X	X
BS013	4903-1F	Switch Knob	X	X
BS014	7325-8C	Switch Operating Rod	X	X
BS015	N/A	Retaining Ring	X	X
BS016	4975-9165	Switch Rod & Knob Assy	X	X
BS017	4903-1F	Scrap Pan Knob	X	X
BS018	N/A	Motor Starting Capacitor	X	X
BS019	2375-0120	Belt	X	X
BSR345	A-07333-5	Bread Slicer Blades (6/pkg)	X	X

BS006
Shoe Post



BS007
Shoe

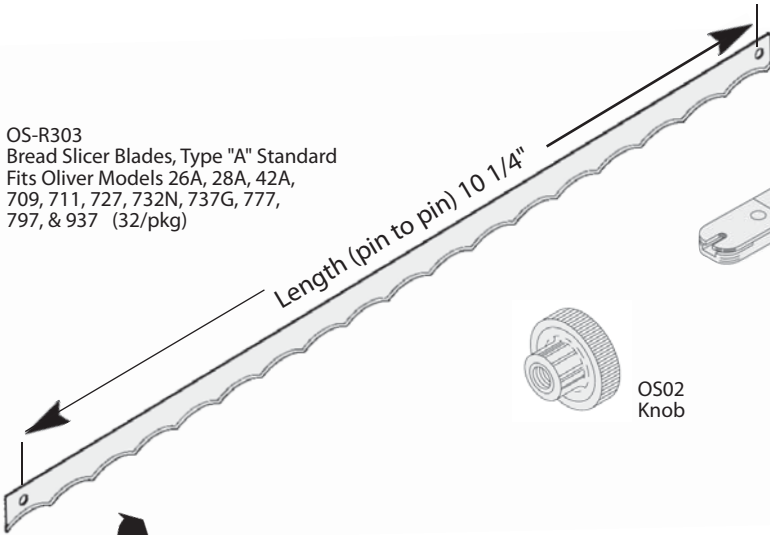


BS002
Rubber Foot
Fits U.S. Berkel
Bread Slicers
Models MB & MB51

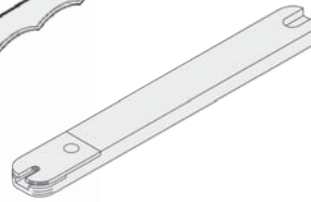
The above described parts are supplied by National Band Saw Company as replacement parts for Berkel equipment.

OLIVER BREAD SLICERS

OS-R303
Bread Slicer Blades, Type "A" Standard
Fits Oliver Models 26A, 28A, 42A,
709, 711, 727, 732N, 737G, 777,
797, & 937 (32/pkg)



OSX101
Blade Removing Tool
New Style



OSX100
Blade Removing Tool



OS02
Knob

OS03
Belt
36" x 1/2"
fits...797

OS04
Belt
29" x 1/2"
fits...777

OS05
Belt
37" x 1/2"
fits...777



BT036
Safety Glove
Cloth w/ Steel Wire

This glove is ambidextrous...
fits right or left hand
Great for protection
against serious cuts.

NBS P/N	OEM P/N	DESCRIPTION
OS02	5911-7000	Knob
OS03	5601-1126	Belt
OS04	5601-1119	Belt
OS05	5601-1127	Belt
OSR303	797-0029-1	Oliver Bread Slicer Blades (32/pkg) Type "A" STD
OSX100	797-0183	Blade Removing Tool
OSX101	797-0183-006K	Blade Removing Tool - New Style

OLIVER BUN and BAGEL SLICERS



NEW

OBS810
Knife Screw
and washer
mounting kit
for the BAGEL
KNIFE



p/n BAGEL KNIFE

NEW

Bagel Slicer Blade,
10 5/8" dia, 5/8" dia
with 3 mounting
holes



OBS801
Knob, Chute Assembly

NEW



OBS802
Screw Clamp, Male

NEW



OBS805
Switch, Power Rocker

NEW



OBS806
Pilot Light, 115 vac

NEW



OBS807
Power Cord, 6'

NEW



OBS809
Foot, Grey
Rubber

NEW

NBS P/N	OEM P/N	DESCRIPTION
BAGEL KNIFE	7107-7053	Knife Serrated 10" 3 mounting holes
OBS801	5911-7034	Knob, chute assembly
OBS802	4560250811	Screw, Clamp male
OBS805	5757-3307	Switch, Power Rocker
OBS806	5709-0021	Pilot Light, 115 vac
OBS807		Power Cord
OBS809		Rubber Foot, Grey



WWW.NBSPARTS.COM

For more parts, Specials, Sales, Discounts and Promotions!
Check your order, item history and track your packages



WWW.NBSPARTS.COM
COUPON CODE: BREAD15
Save 15% off entire purchase of
mixer/bread slicer parts at
www.nbsparts.com.
One time use per account
Valid 1/2018 to 12/31/18

CUSTOMERSERVICE@NBSPARTS.COM

 nationalbandsaw	 nationalbandsaw
 nbsparts.com/blog	 nationalbandsaw

NOTES: _____

