

Meat Grinder



We have grinder Knives, plates, rings, Worms, stompers and many more parts for Butcher Boy grinder.

This image is only for reference and not affiliated with manufacture.

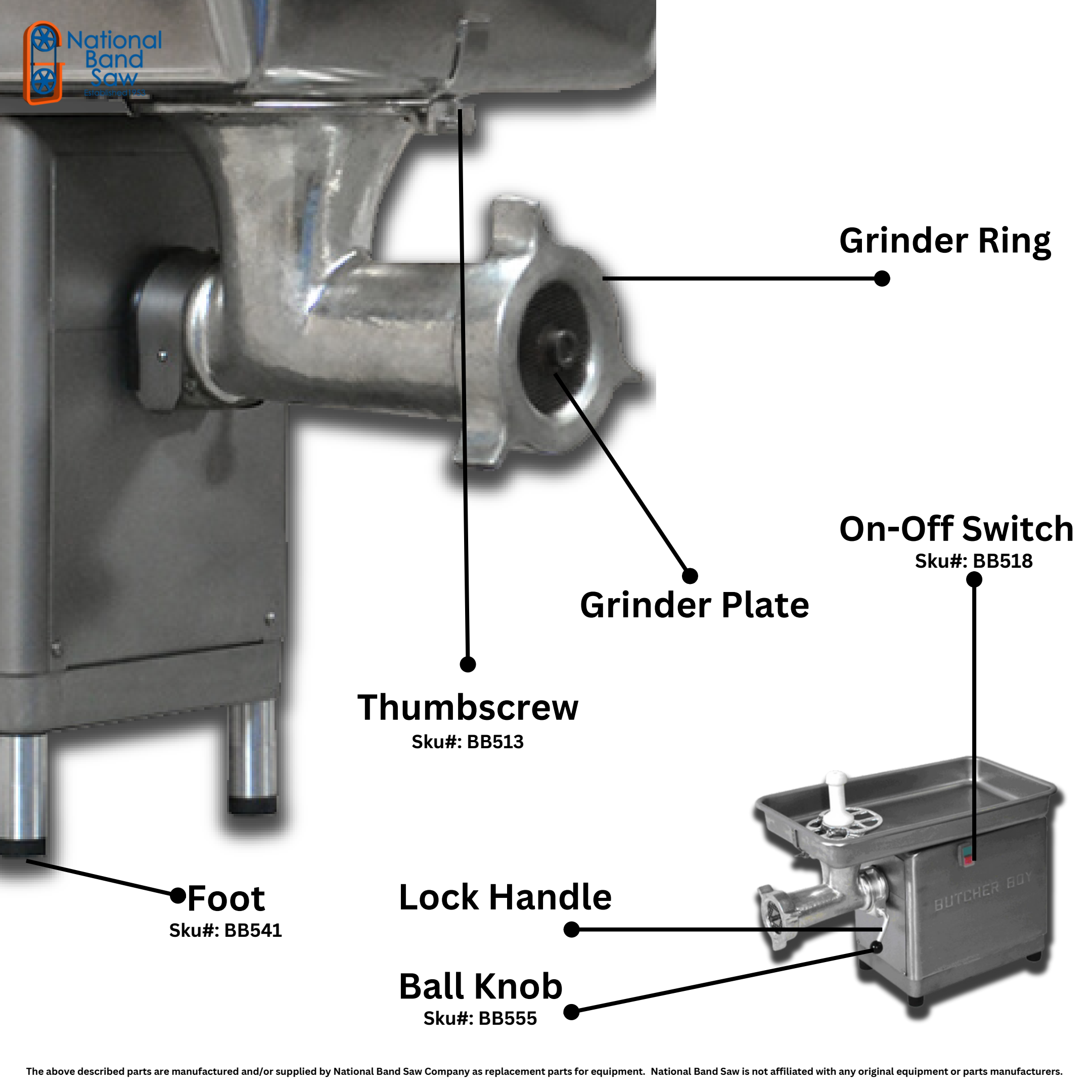


Ground Beef



Beef Patties





Grinder Ring

Grinder Plate

Thumbscrew

Sku#: BB513

On-Off Switch

Sku#: BB518

Foot

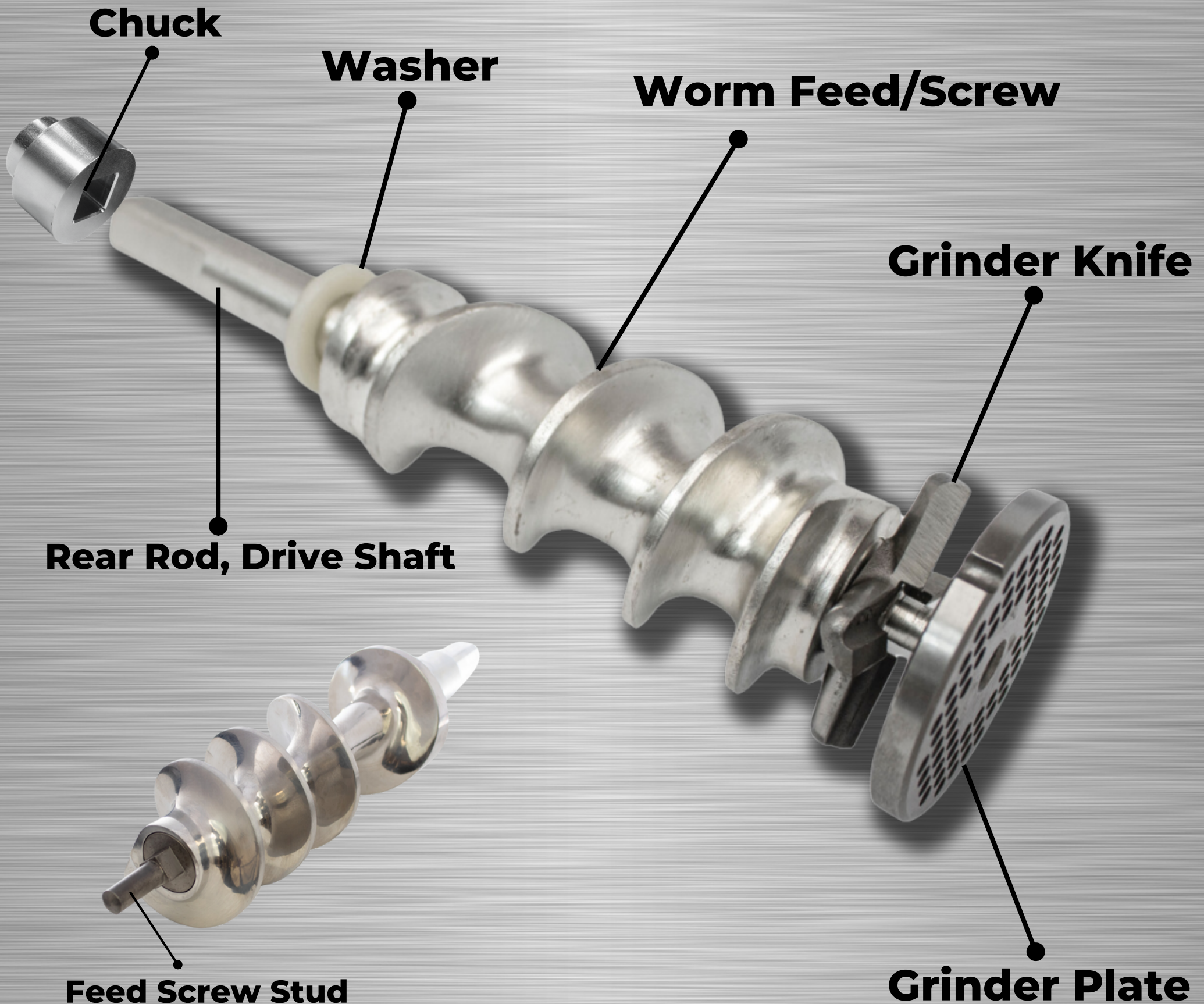
Sku#: BB541

Lock Handle

Ball Knob

Sku#: BB555

Worm Assembly Components



Worm/Feed Screw Sizes

Fits Butcher Boy Grinders

Sku#: BB536A
Size 42



Sku#: BB519A
Size 22



Sku#: BB532A
Size 12



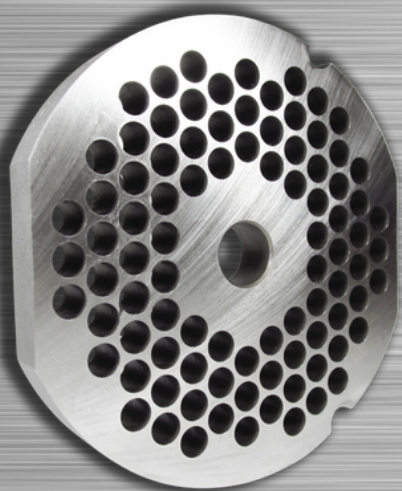
Sku#: BB534A
Size 32



Flat Edge Plates

Fits Butcher Boy Grinders

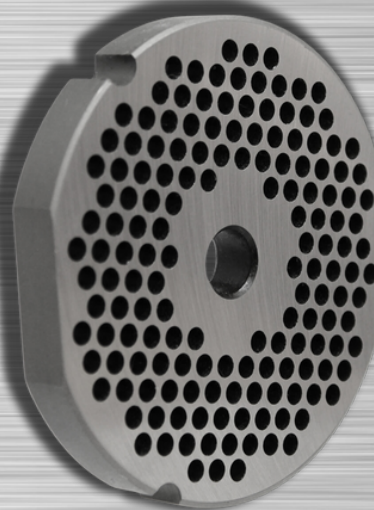
1/4" Hole



1/8" Hole



3/16" Hole



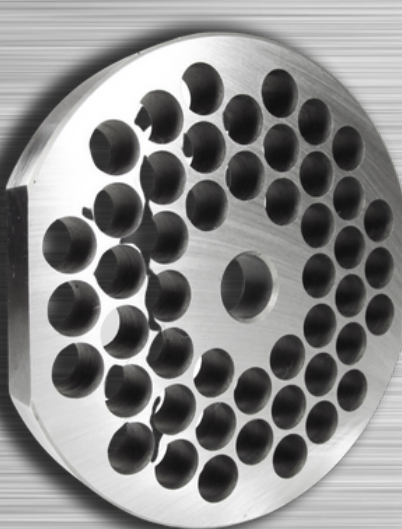
1" Hole



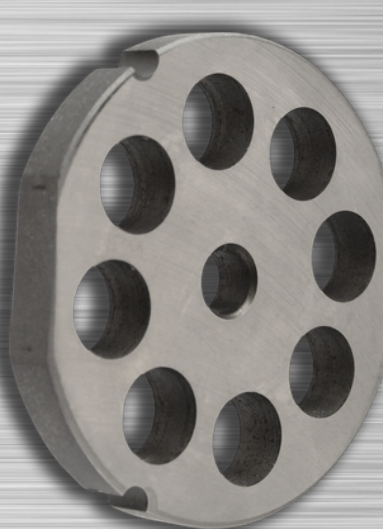
1/2" Hole



3/8" Hole



3/4" Hole



3 Kidney Hole

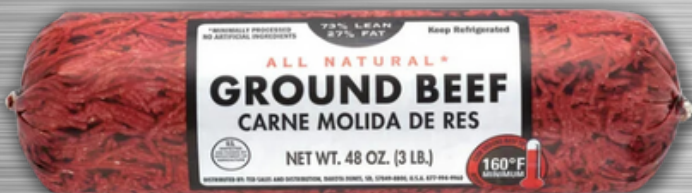


Stomper

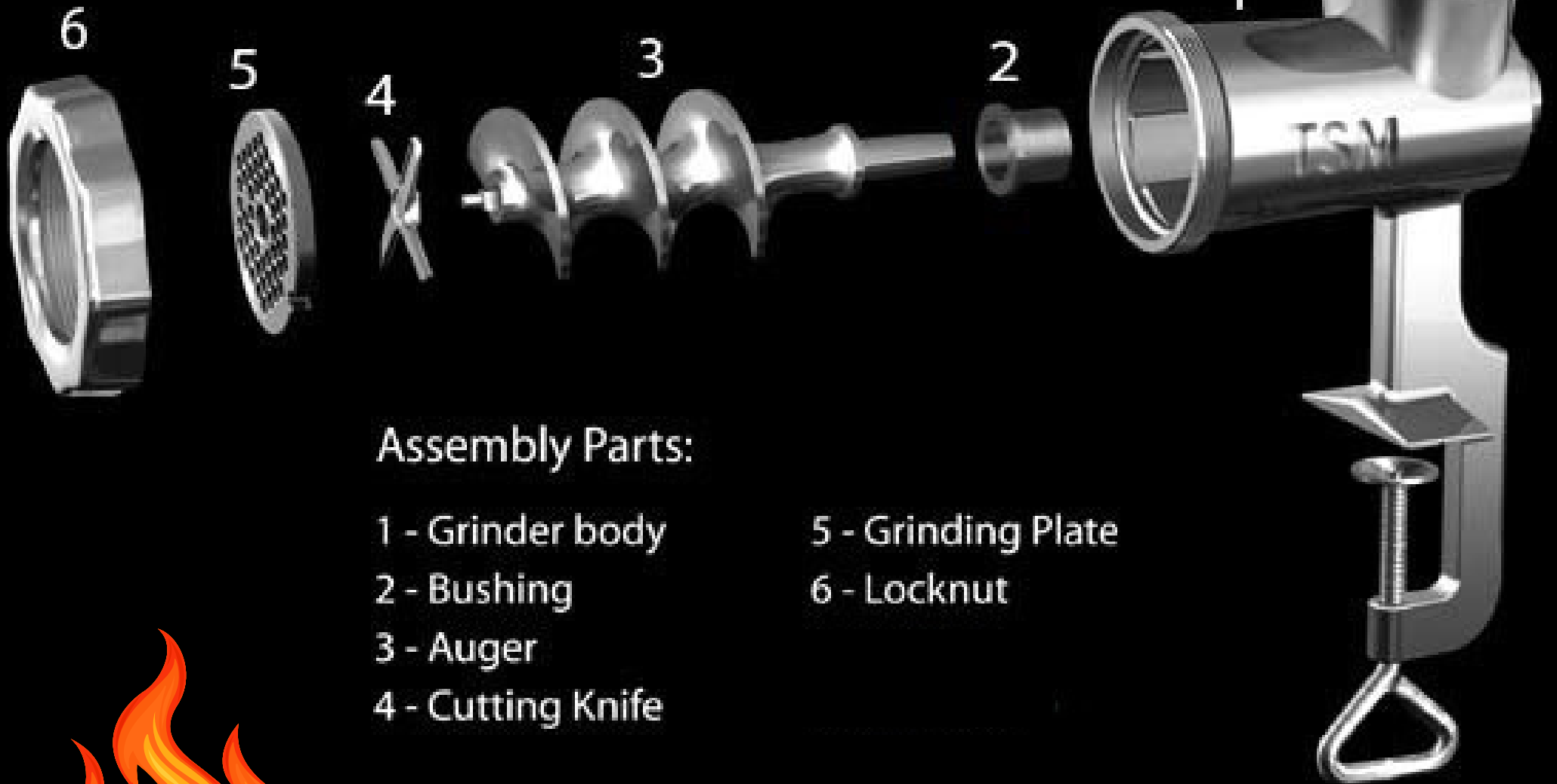


Sku#: GR04, GR05, GR06

The Meat Grinder stomper is an essential accessory for any meat grinder. The stomper is designed with a comfortable grip handle, allowing for easy and controlled operation.



Spread Parts of Grinding Unit



Assembly Parts:

1 - Grinder body

2 - Bushing

3 - Auger

4 - Cutting Knife

5 - Grinding Plate

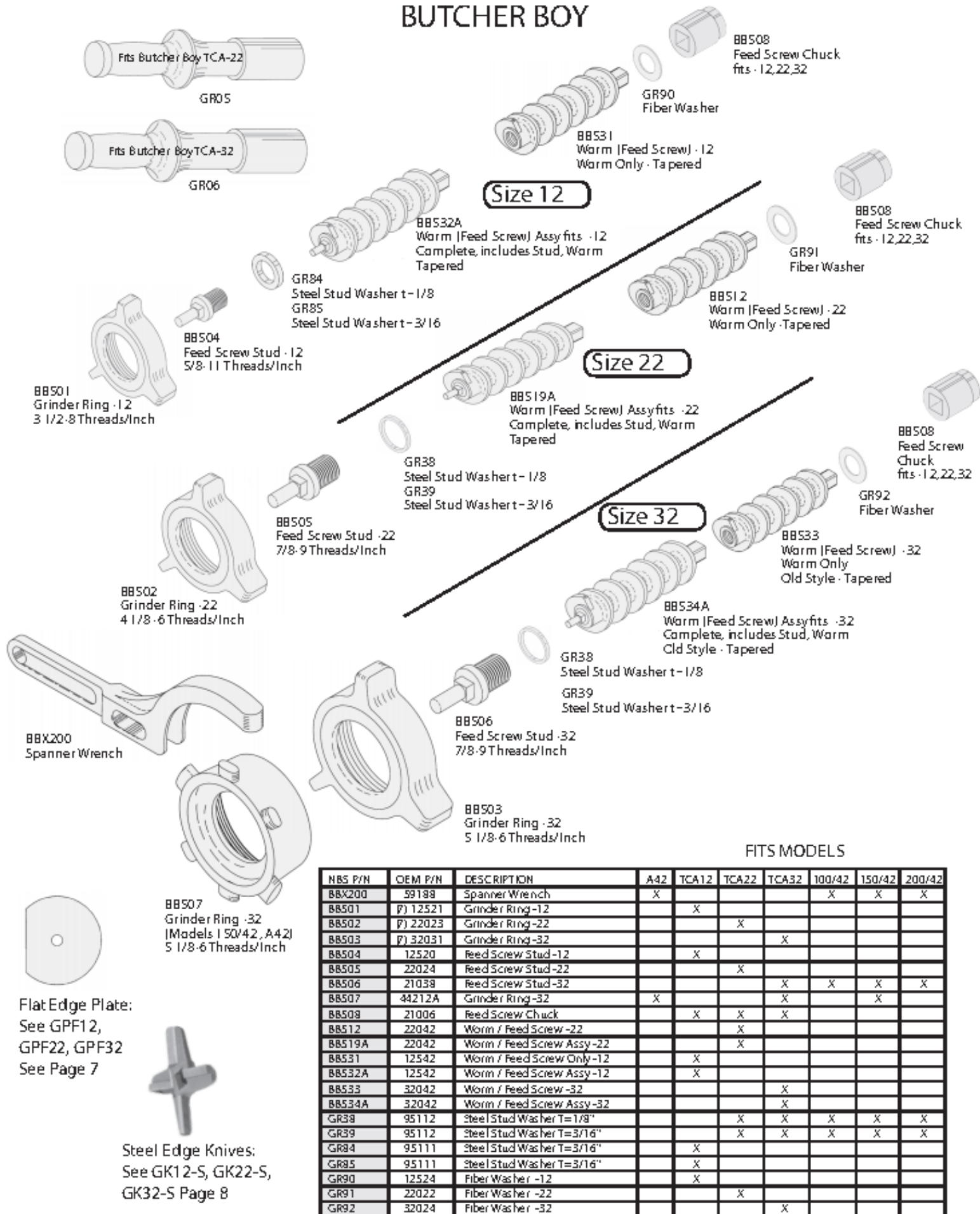
6 - Locknut



Ground Meat



BUTCHER BOY



FITS MODELS

NBS P/N	OEM P/N	DESCRIPTION	A42	TCA12	TCA22	TCA32	100/42	150/42	200/42
BBX200	59188	Spanner Wrench	X				X	X	X
BB501	P) 12521	Grinder Ring -12		X					
BB502	P) 22023	Grinder Ring -22			X				
BB503	P) 32031	Grinder Ring -32				X			
BB504	12520	Feed Screw Stud -12		X					
BB505	22024	Feed Screw Stud -22			X				
BB506	21038	Feed Screw Stud -32				X	X	X	X
BB507	44212A	Grinder Ring -32	X			X		X	
BB509	21006	Feed Screw Chuck		X	X	X			
BB512	22042	Worm / Feed Screw -22			X				
BB519A	22042	Worm / Feed Screw Assy -22			X				
BB531	12542	Worm / Feed Screw Only -12		X					
BB532A	12542	Worm / Feed Screw Assy -12		X					
BB533	32042	Worm / Feed Screw -32				X			
BB534A	32042	Worm / Feed Screw Assy -32				X			
GR38	95112	Steel Stud Washer T=1/8"			X	X	X	X	X
GR39	95112	Steel Stud Washer T=3/16"			X	X	X	X	X
GR84	95111	Steel Stud Washer T=3/16"		X					
GR85	95111	Steel Stud Washer T=3/16"		X					
GR90	12524	Fiber Washer -12		X					
GR91	22022	Fiber Washer -22			X				
GR92	32024	Fiber Washer -32				X			

The above described parts are supplied by National Band Saw Company as replacement parts for Butcher Boy equipment.

BUTCHER BOY

Available
Stamper

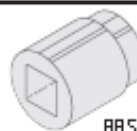
GR04



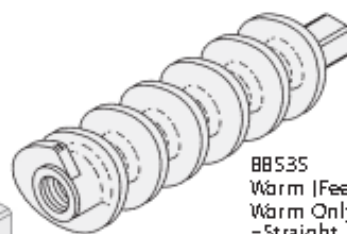
Size 42

GR93
Fiber Washer -42

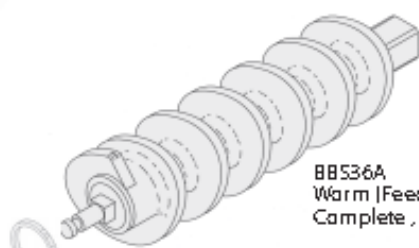
BB509
Feed Screw Chuck
fits -42, 52



BB535
Worm (Feed Screw) -42
Worm Only
-Straight



BB536A
Worm (Feed Screw) -42
Complete, includes Stud, Worm



GR38
Steel Stud Washert - 1/8

GR39
Steel Stud Washert - 3/16

BB506
Feed Screw Stud -32
7/8-9 Threads/Inch



Steel Edge Knives:
See GK52-S
See Page 8



2 Flat Edge Plate:
See GP52-2F
See Page 7



Size 52

BB509
Feed Screw Chuck
fits -42, 52



GR94
Fiber Washer -52



GR35
Steel Stud Washert - 1/8

GR36
Steel Stud Washert - 3/16

BB510
Feed Screw Stud -52
1-8 Threads/Inch



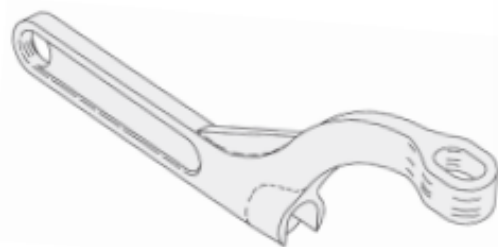
BBX200
Spanner Wrench



BB530
Grinder Ring
Fits - A52
6 1/4-6 Threads/Inch



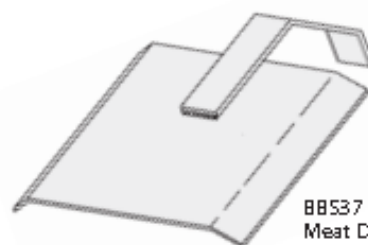
BBX500
Spanner Wrench
fits...AFMG-24,
AFMG48/52



BB540
Meat Deflector
Knob



BB537
Meat Deflector

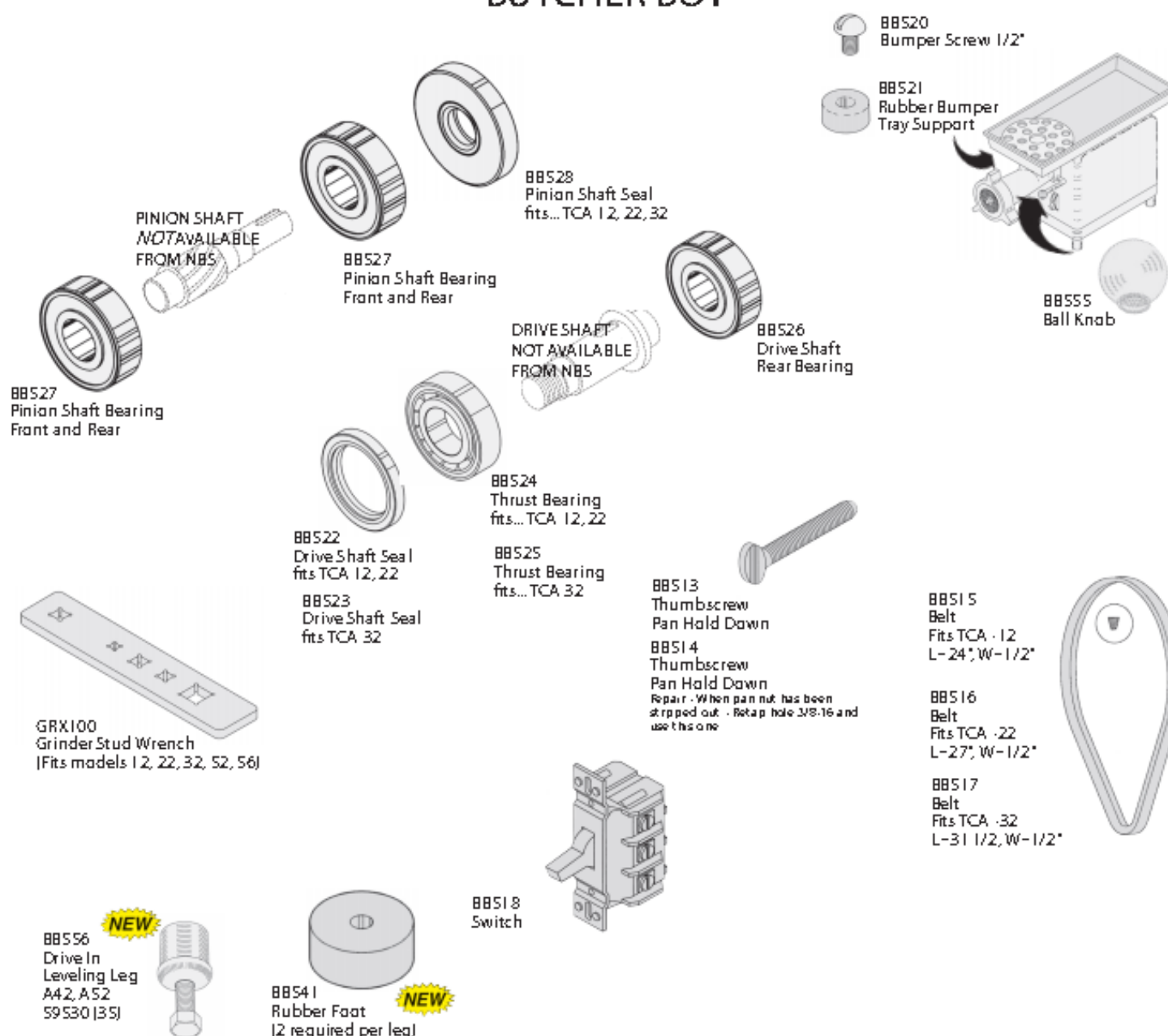


RTS MODELS

NBS P/N	OEM P/N	DESCRIPTION	A42	A52	100/42	100/52	150/42	150/52	200/42	200/52	250/52
BB506	21038	Feed Screw Stud -32	X		X		X		X		
BB509	59060	Feed Screw Chuck	X	X						X	X
BB510	52026	Feed Screw Stud -52		X		X		X		X	X
BB530	53016	Grinder Ring -52		X		X		X		X	
BB535	42542	Worm / Feed Screw -42	X								
BB536A	42542A	Worm / Feed Screw Assy -42	X								
BB537	59208	Meat Deflector	X	X							
BB540	59224	Meat Deflector Knob	X	X							
BBX200	59188	Spanner Wrench	X	X		X		X		X	
BBX500	59233	Spanner Wrench									
GR35	95655	Steel Stud Washer		X		X		X	X		
GR36	95655	Steel Stud Washer		X		X		X		X	X
GR38	95113	Steel Stud Washer	X		X		X		X		
GR39	95113	Steel Stud Washer	X		X		X		X		
GR93	59273	Fiber Washer	X								
GR94	59274	Fiber Washer		X		X				X	X

The above described parts are supplied by National Band Saw Company as replacement parts for Butcher Boy equipment.

BUTCHER BOY



RTS MODELS

NBS P/N	CEM P/N	DESCRIPTION	A42	A52	TCA12	TCA22	TCA32	100/42	100/52	150/42	150/52	200/42	200/52
BB513	134125576	Thumbscrew			X	X	X						
BB514	N/A	Thumbscrew			X	X	X						
BB515	90506	Belt			X								
BB516	90508	Belt				X							
BB517	90507	Belt					X						
BB518	21193020	Switch			X	X	X						
BB520	N/A	Bumper Screw 1/2"					X	X		X		X	
BB521	32	Rubber Bumper Tray			X	X	X			X			
BB522	90409	Drive Shaft Seal			X	X							
BB523	90413	Drive Shaft Seal					X						
BB524	90308	Thrust Bearing-12, 22			X	X							
BB525	90309	Thrust Bearing-32					X						
BB526	90302	Dr. Shaft Rear Bearing			X	X	X						
BB527	90307	Pinion Shaft Bearing			X	X	X						
BB528	90410	Pinion Shaft Seal				X	X	X					
BB541	21032	Rubber Foot			X	X	X						
BB555	90625	Ball Knob			X	X	X						
BB556	59590	Drive-In Leveling Leg	X	X									
GRX100	N/A	Grinder Stud Wrench	X	X	X	X	X	X	X	X	X	X	X

The above described parts are supplied by National Band Saw Company as replacement parts for Butcher Boy equipment.

BUTCHER BOY SEALS

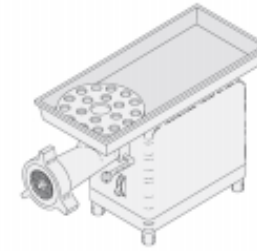


BB522
Drive Shaft Seal
fits TCA 12, 22

BB523
Drive Shaft Seal
fits TCA 32



NEW
BB550
Seal - Small Drive Shaft
fits AU52
90406



BB528
Pinion Shaft Seal
fits... TCA 12, 22, 32



NEW
BB551
Seal - Gear Box
90408



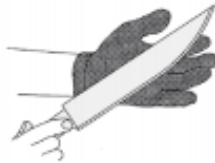
NEW
BB554
Seal - Gear Box
fits... 100/42, 100/52
90405



NEW
BB552
Seal - Feed Screw Chuck
fits TCA 12, 22



NEW
BB556
Seal - Drive Shaft
fits... 100/42, 100/52

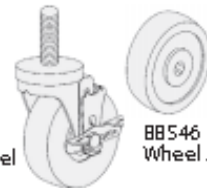


HT123
Safety Glove
Cloth w/ Steel Wire

This glove is ambidextrous...
fits right or left hand



NEW
BB553
Seal - Gear Box
fits 100/42
90404



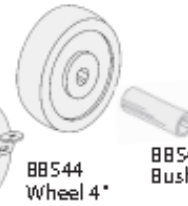
BB545
Swivel Wheel
3" Dia
1/2", 13 tpi



BB546
Wheel 3"



BB543
Swivel Wheel
4" Dia
5/8", 11 tpi



BB544
Wheel 4"



BB547
Bushing

NBS P/N	OEM P/N	DESCRIPTION	A42	A52	TCA12	TCA22	TCA32	100/42	100/52	150/42	150/52	200/42	200/52
BB522		Seal - Drive Shaft			X	X							
BB523		Seal					X						
BB528	90410	Seal - Pinion Shaft			X	X	X						
BB543		Caster-Swivel w/ Lock					X	X		X		X	
BB544		Wheel 4"; for Caster					X	X		X		X	
BB545		Caster-Swivel w/ Lock					X	X		X		X	
BB546		Wheel 3"; for Caster					X	X		X		X	
BB547		Bushing, Caster Wheel					X	X		X		X	
BB550	90406	Seal - Small Drive Shaft		X									
BB551	90408	Seal - Gear Box			X								
BB552		Seal - Feed Screw Chuck			X	X							
BB553	90404	Seal - Gear Box						X					
BB554	90405	Seal - Gear Box						X	X				
BB556		Seal - Drive Shaft						X	X				

The above described parts are supplied by National Band Saw Company as replacement parts for Butcher Boy equipment.

What Does A Meat Grinder Do?

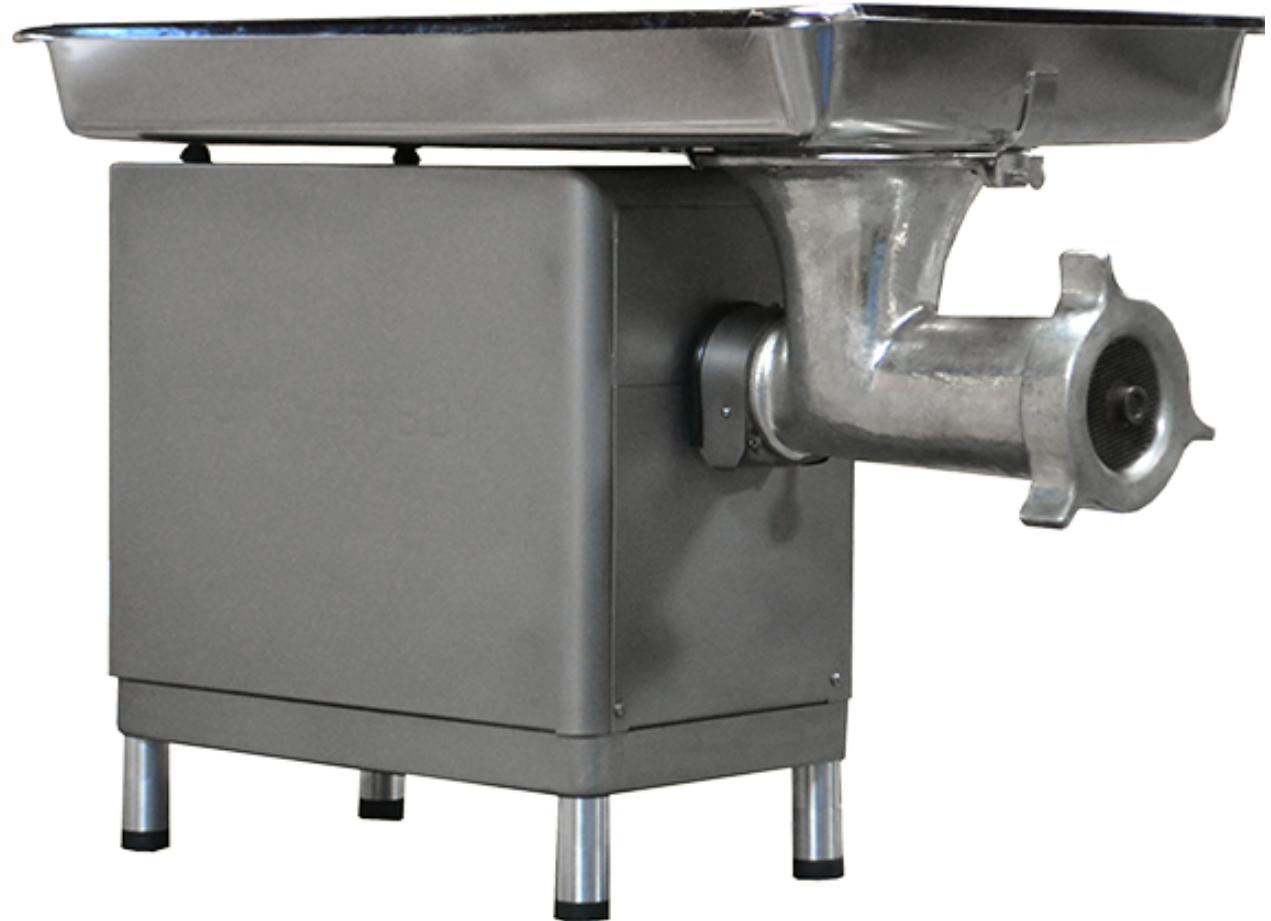
Meat Being Grinded



Beef Patties



Ground Beef



The Meat Grinder is a versatile kitchen appliance that allows you to grind various types of meat effortlessly. With its powerful motor and sharp blades, it can quickly and efficiently grind meat to your desired consistency. Whether you want to make homemade sausages, burgers, or meatloaf, this grinder is perfect for any meat preparation task.

Butcher Boy Meat Grinder

Model: TCA Series

The Butcher Boy Grinder is a high-quality kitchen appliance designed for grinding various types of meat with ease and efficiency. With a powerful motor and durable construction, this powerful meat grinder can grind up to 400 pounds of meat per hour. It is made with a stainless-steel construction for extra durability and longevity in your kitchen. The TCA series includes TCA -12, TCA -22, TCA -32.



The above described parts are manufactured and/or supplied by National Band Saw Company as replacement parts for equipment. National Band Saw is not affiliated with any original equipment or parts manufacturers.

