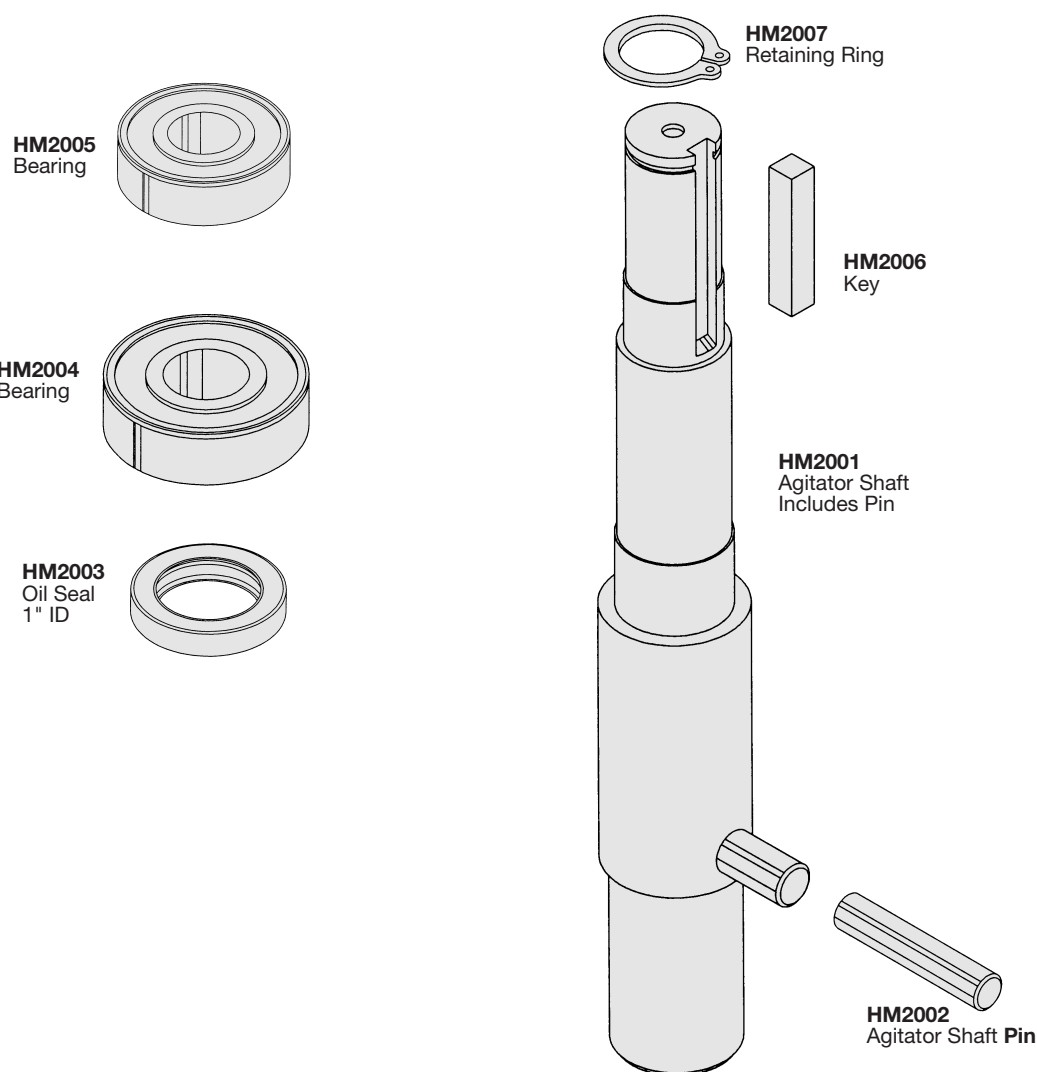


# AGITATOR SHAFT & COMPONENTS

**Fits HOBART  
MODEL A-200**



### FITS MODELS

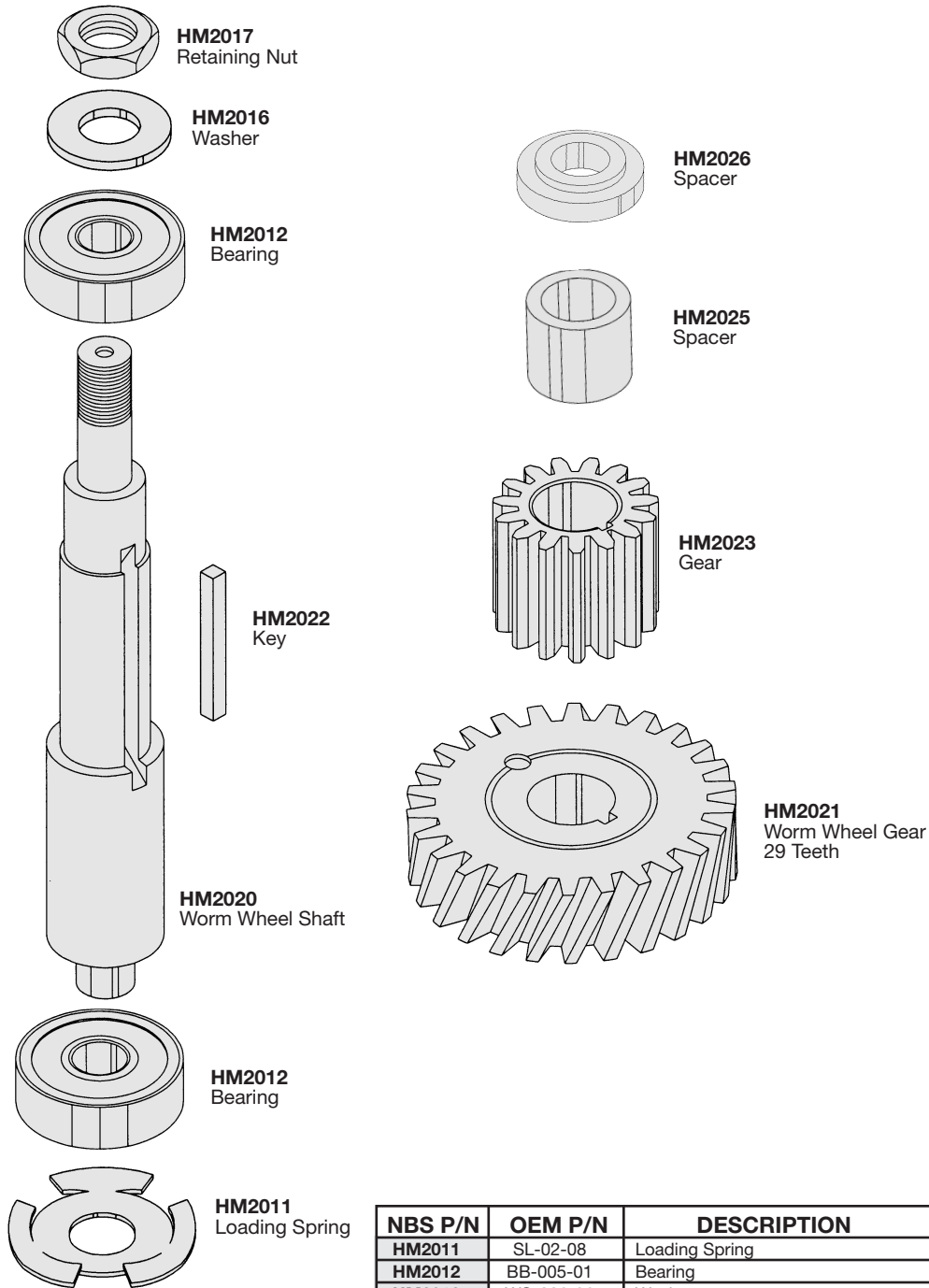
| NBS P/N | OEM P/N   | DESCRIPTION        | A-120 | A-200 |
|---------|-----------|--------------------|-------|-------|
| HM2001  | 113936    | Agitator Shaft     |       | X     |
| HM2002  | 65062-1   | Agitator Shaft Pin |       | X     |
| HM2003  | 23482     | Oil Seal 1" ID     |       | X     |
| HM2004  | BB-20-6   | Bearing            |       | X     |
| HM2005  | BB-17-12  | Bearing            |       | X     |
| HM2006  | 12430-55  | Key                |       | X     |
| HM2007  | RR-004-18 | Retaining Ring     | X     | X     |

The above described parts are supplied by **National Band Saw Company** as replacement parts for **Hobart** equipment.



# WORM WHEEL SHAFT & COMPONENTS

**Fits HOBART  
MODELS #A-120, A-200**



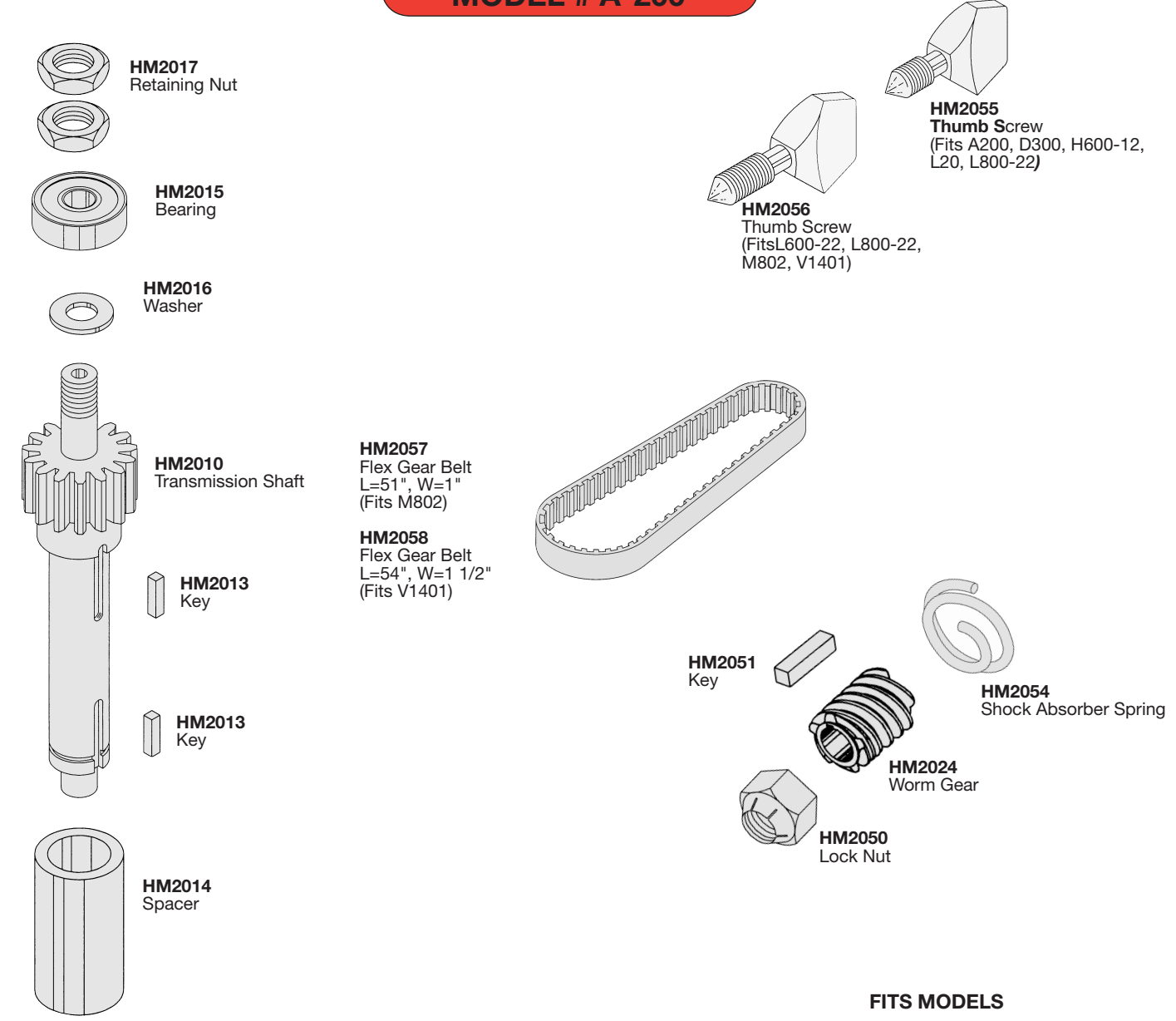
| NBS P/N | OEM P/N   | DESCRIPTION      | FITS MODELS |       |
|---------|-----------|------------------|-------------|-------|
|         |           |                  | A-120       | A-200 |
| HM2011  | SL-02-08  | Loading Spring   | X           | X     |
| HM2012  | BB-005-01 | Bearing          | X           | X     |
| HM2016  | WS-006-36 | Washer           | X           | X     |
| HM2017  | 12710     | Retaining Nut    | X           | X     |
| HM2020  | 291128    | Worm Wheel Shaft | X           | X     |
| HM2021  | 124751-3  | Worm Wheel Gear  | X           | X     |
| HM2022  | 12430-4   | Key              | X           | X     |
| HM2023  | 124748    | Gear             | X           | X     |
| HN2025  | 124765-1  | Spacer           | X           | X     |
| HM2026  | 124745    | Spacer           | X           | X     |

The above described parts are supplied by **National Band Saw Company** as replacement parts for **Hobart** equipment.



# TRANSMISSION SHAFT & COMPONENTS

**Fits HOBART  
MODEL # A-200**



**FITS MODELS**

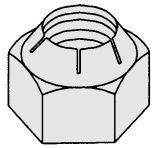
| NBS P/N | OEM P/N   | DESCRIPTION           | A-120 | A-200 | D300 | M802 | V1401 |
|---------|-----------|-----------------------|-------|-------|------|------|-------|
| HM2007  | RR-004-18 | Retaining Ring        |       | X     |      |      |       |
| HM2010  | 291236    | Transmission Shaft    | X     | X     |      |      |       |
| HM2011  | SL-02-08  | Loading Spring        |       | X     |      |      |       |
| HM2012  | BB-005-01 | Bearing               |       | X     |      |      |       |
| HM2013  | 435297    | Key                   | X     | X     |      |      |       |
| HM2014  | 12697     | Spacer                | X     | X     |      |      |       |
| HM2015  | BB-005-02 | Bearing               |       | X     |      |      |       |
| HM2016  | WS-6-36   | Washer                |       | X     |      |      |       |
| HM2017  | 12710     | Retaining Nut         |       | X     |      |      |       |
| HM2024  | 291221    | Worm Gear             | X     | X     | X    |      |       |
| HM2050  | NS-32-23  | Lock Nut              | X     | X     | X    |      |       |
| HM2051  | 12747     | Key                   | X     | X     |      |      |       |
| HM2054  | 12757     | Shock Absorber Spring |       | X     | X    |      |       |
| HM2055  | 108197-1  | Thumb Screw           |       | X     | X    |      |       |
| HM2056  | 108197-2  | Thumb Screw           |       |       |      | X    | X     |
| HM2057  | 65107     | Flex Gear Belt        |       |       |      | X    |       |
| HM2058  | 68043     | Flex Gear Belt        |       |       |      |      | X     |

The above described parts are supplied by National Band Saw Company as replacement parts for Hobart equipment.

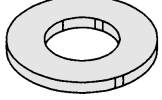


# PLANETARY SHAFT & COMPONENTS

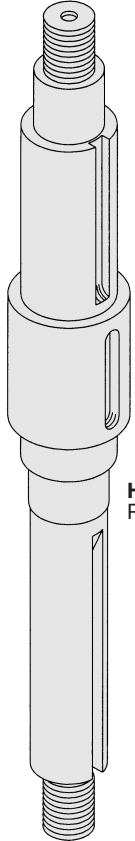
**Fits HOBART  
MODELS #A-120, A-200**



**HM2047**  
Stop Nut



**HM2046**  
Washer



**HM2030**  
Planetary Shaft



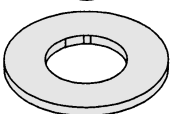
**HM2045**  
Key



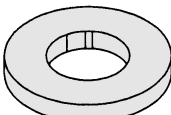
**HM2039**  
Key



**HM2037**  
Key



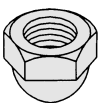
**HM2031**  
Fiber Washer



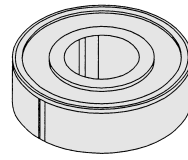
**HM2032**  
Retaining Washer



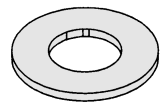
**HM2033**  
Special Nut



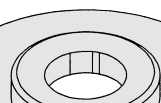
**HM2034**  
Acorn Nut



**HM2044**  
Bearing



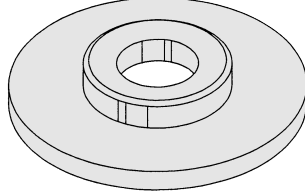
**HM2041**  
Shim .001"



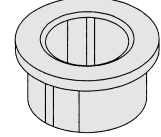
**HM2042**  
Shim .003"



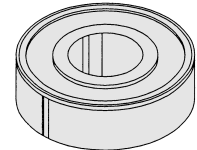
**HM2043**  
Shim .010"



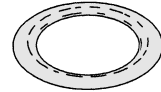
**HM2040**  
Spacer



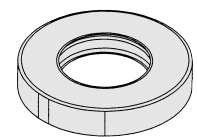
**HM2038**  
Clutch Gear Bearing



**HM2004**  
Bearing



**HM2036**  
O-Ring



**HM2035**  
Oil Seal

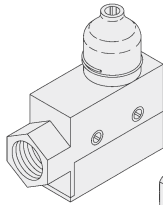
**FITS MODELS**

| NBS P/N | OEM P/N   | DESCRIPTION         | A-120 | A-200 |
|---------|-----------|---------------------|-------|-------|
| HM2004  | BB-20-6   | Bearing             |       | X     |
| HM2030  | 124734    | Planetary Shaft     | X     | X     |
| HM2031  | 124946    | Fiber Washer        | X     | X     |
| HM2032  | WS-024-01 | Retaining Washer    | X     | X     |
| HM2033  | 10928-2   | Special Nut         | X     | X     |
| HM2034  | 24715-3   | Acorn Nut           | X     | X     |
| HM2035  | 114695    | Oil Seal            | X     | X     |
| HM2036  | 67500-78  | O-Ring              |       | X     |
| HM2037  | 12430-17  | Key                 | X     | X     |
| HM2038  | 12695     | Clutch Gear Bearing |       | X     |
| HM2039  | 12430-59  | Key                 | X     | X     |
| HM2040  | 107145    | Spacer              | X     | X     |
| HM2041  | WS-10-18  | Shim .001"          | X     | X     |
| HM2042  | WS-10-19  | Shim .003"          | X     | X     |
| HM2043  | WS-10-20  | Shim .010"          | X     | X     |
| HM2044  | BB-20-18  | Bearing             | X     | X     |
| HM2045  | 109070-2  | Key                 | X     | X     |
| HM2046  | WS-8-13   | Washer              | X     | X     |
| HM2047  | NS-32-29  | Stop Nut            | X     | X     |

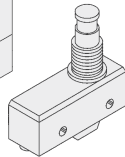
The above described parts are supplied by **National Band Saw Company** as replacement parts for **Hobart** equipment.



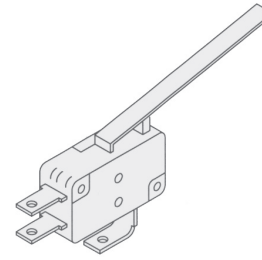
# ELECTRICAL COMPONENTS



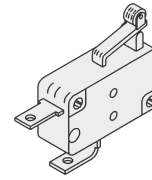
**HM2070**  
Interlock Switch Assy  
Includes Housing and Switch



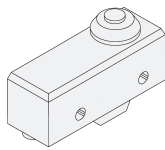
**HM2071**  
Interlock Switch Only



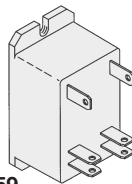
**HM2062**  
Switch  
fits... A200



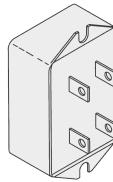
**HM2061**  
Switch  
fits... L20



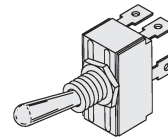
**HM2063**  
Switch  
fits...H600, L800



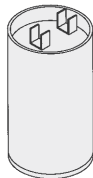
**HM2059**  
Relay  
fits... L20, A120,  
A200



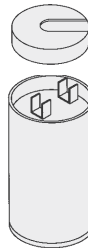
**HM2060**  
Start Switch  
fits... L20, A120,  
A200, D300



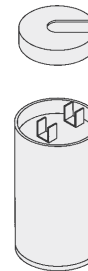
**HM100**  
On-Off Switch



**HM2069**  
Capacitor  
145-174 mfd  
fits... A200



**HM2065**  
Capacitor  
650-750 mfd  
fits...H600, L800



**HM2066**  
Capacitor  
243 -292 mfd  
fits...D300, L20



**HM2068**  
Capacitor Cap



**HM2067**  
Capacitor Cap

### FITS MODELS

| NBS P/N | OEM P/N     | DESCRIPTION             | A120 | A200 | D300 | H600 | L20 | L600 | L800 |
|---------|-------------|-------------------------|------|------|------|------|-----|------|------|
| HM100   | 120388      | On-Off Switch           | X    | X    |      |      |     |      |      |
| HM2059  | 87714-042-1 | Relay                   | X    | X    |      |      | X   |      |      |
| HM2060  | 271612-2    | Start Switch            | X    | X    | X    |      | X   |      |      |
| HM2061  | 87711-201-2 | Switch                  |      |      |      |      | X   |      |      |
| HM2062  | 87711-248   | Switch                  |      | X    |      |      |     |      |      |
| HM2063  | 87711-71-1  | Switch                  |      |      |      | X    |     |      | X    |
| HM2065  | 70487-9     | Capacitor               |      |      |      | X    |     |      | X    |
| HM2066  | 70487-1     | Capacitor               |      |      | X    |      | X   |      |      |
| HM2067  | 70486-2     | Capacitor Cap           |      |      | X    |      | X   |      |      |
| HM2068  | 70486-3     | Capacitor Cap           |      |      |      | X    |     |      | X    |
| HM2069  | 70487-18    | Capacitor               |      | X    |      |      |     |      |      |
| HM2070  | 87711-060-1 | Interlock Switch - Assy |      |      |      | X    |     |      | X    |
| HM2071  | 87711-060-1 | Interlock Switch - Only |      |      |      | X    |     |      | X    |

The above described parts are supplied by **National Band Saw Company** as replacement parts for **Hobart** equipment.

