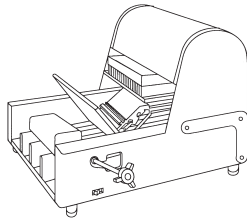


BERKEL BREAD SLICERS



BS017
Scrap Pan Knob

BS005
Damper Knob



BS003
Crankshaft Bearing

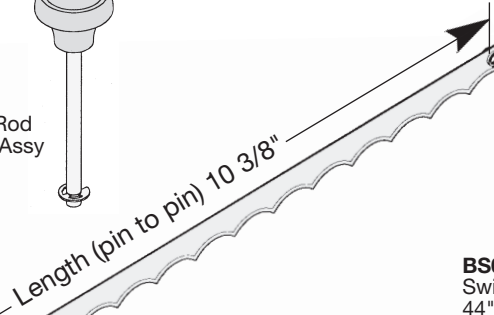
BS013
Switch Knob

BS014
Switch Operating Rod

BS015
Retaining Ring

BS016
Switch Rod & Knob Assy

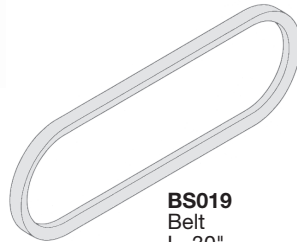
BS009
Power Cord
6' Long
16 AWG



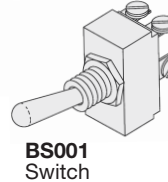
BS-R345
Bread Slicer Blades
Fits U.S. Berkel Models MB, GMB, & MB716 (6/pkg)

BS008
Switch To Motor Cord
44" Long

BS010
Blade Tension Nut



BS019
Belt
L=30",
W=1/2"



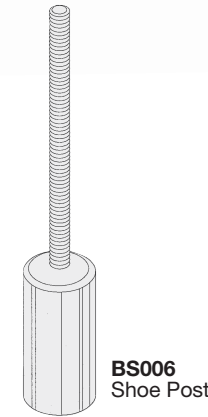
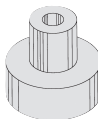
BS001
Switch



BT036
Safety Glove
Cloth w/ Steel Wire

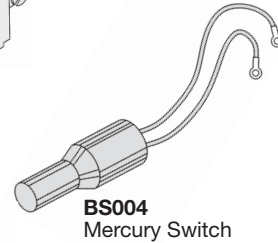
This glove is ambidextrous...
fits right or left hand
Great for protection
against serious cuts.

BS002
Rubber Foot
Fits U.S. Berkel
Bread Slicers
Models MB & MB51



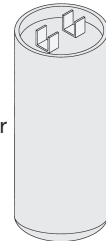
BS006
Shoe Post

BS011
Switch Clamp
Holds Mercury Switch on Bread
Slicers (steel)



BS004
Mercury Switch

BS018
Motor Capacitor
(189-227mfd)



FITS MODELS

NBS P/N	OEM P/N	DESCRIPTION	MB	GMB
BS001	2675-0028	Switch	X	X
BS002	A3000-1	Rubber Foot	X	
BS003	2374-0010	Chankshaft Bearing	X	X
BS004	2675-0646	Mercury Switch	X	
BS005	2275-0063	Damper Knob		X
BS006	4575-0208	Shoe Post		X
BS007	3675-0061	Shoe		X
BS008	4175-0032	Switch to Motor Cord	X	X
BS009	4175-0031	Power Cord	X	X
BS010	3375-0990	Blade Tension Nut	X	X
BS011	3675-0219	Switch Clamp	X	X
BS013	4903-1F	Switch Knob	X	X
BS014	7325-8C	Switch Operating Rod	X	X
BS015	N/A	Retaining Rod	X	X
BS016	4975-9165	Switch Rod & Knob Assy	X	X
BS017	4903-1F	Scrap Pan Knob	X	X
BS018	N/A	Motor Starting Capacitor	X	X
BS019	2375-0120	Belt	X	X
BS-R345	A-07333-5	Bread Slicer Blades (6/pkg)	X	X

The above described parts are supplied by **National Band Saw Company** as replacement parts for **Berkel** equipment.

